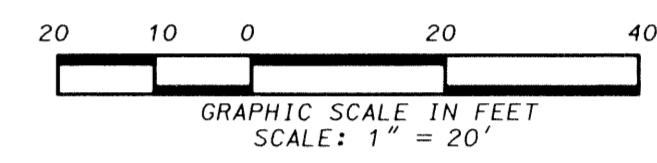
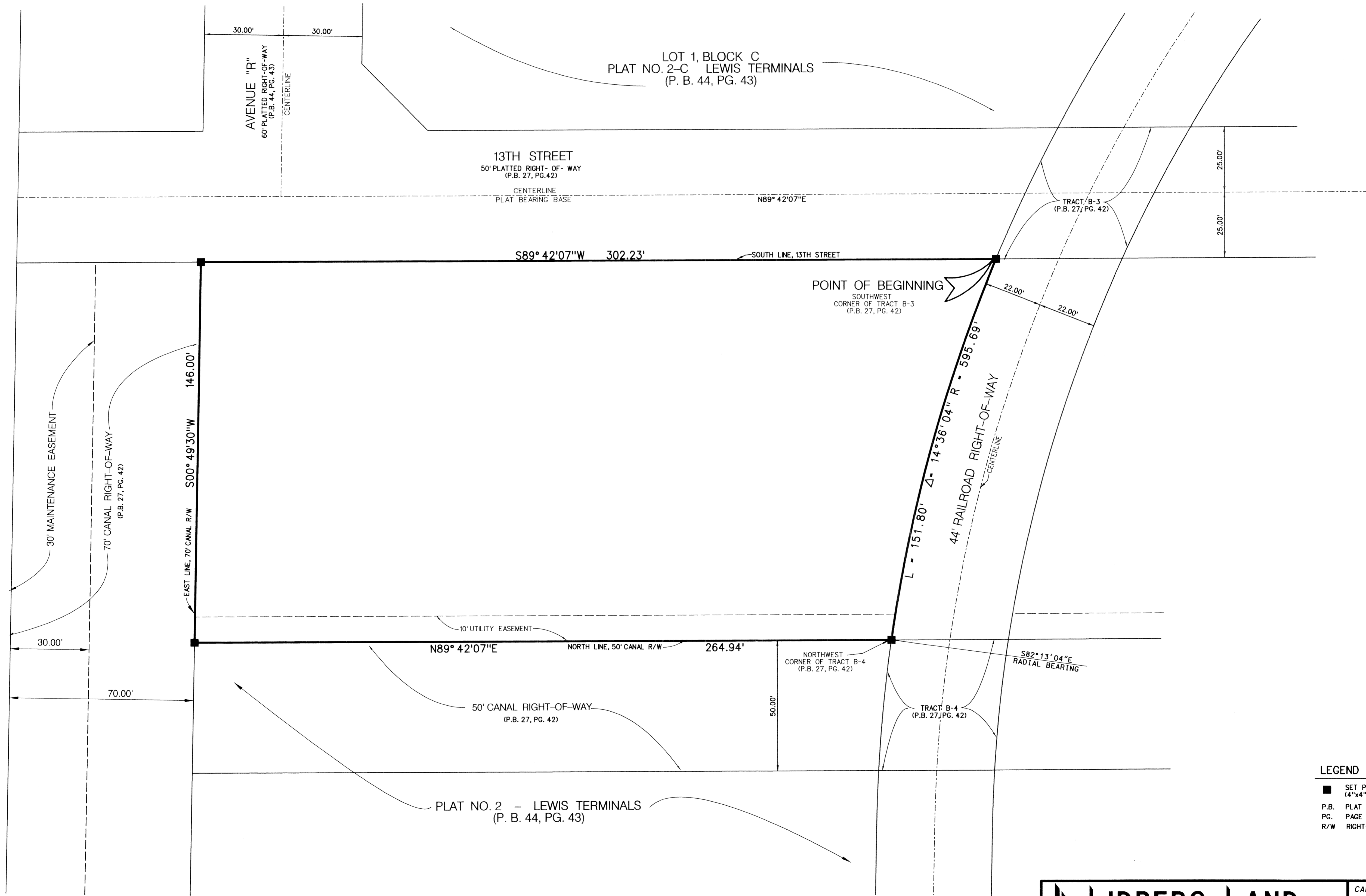


NORRICH

LYING IN SECTION 32, TOWNSHIP 42 SOUTH, RANGE 43 EAST,
 CITY OF RIVIERA BEACH, PALM BEACH COUNTY, FLORIDA
 AND BEING A REPLAT OF A PORTION OF PLAT NO. 2 LEWIS TERMINALS
 ACCORDING TO THE PLAT THEREOF, AS RECORDED IN PLAT BOOK 27, PAGES 42 THROUGH 44
 MARCH, 2004 SHEET 2 OF 2



LEGEND / ABBREVIATIONS

- SET PERMANENT REFERENCE MONUMENT (4"x4" CONCRETE MONUMENT LB #4431)
- P.B. PLAT BOOK
- PG. PAGE
- R/W RIGHT-OF-WAY

LIDBERG LAND SURVEYING, INC.
 675 West Indiantown Road, Suite 200,
 Jupiter, Florida 33458 TEL. 561-746-8454

CAD: K:\UST \ 324243 \ 27-42 \ 3377306A \ 3377306A.DGN			
REF.			
FLD. J.P.	FB. PG.	JOB 97-337-306A	
OFF. L.J.C.	270 14	DATE 12/31/03	
CKD. D.C.L.	SHEET 2 OF 2	DWG. D97-337P	